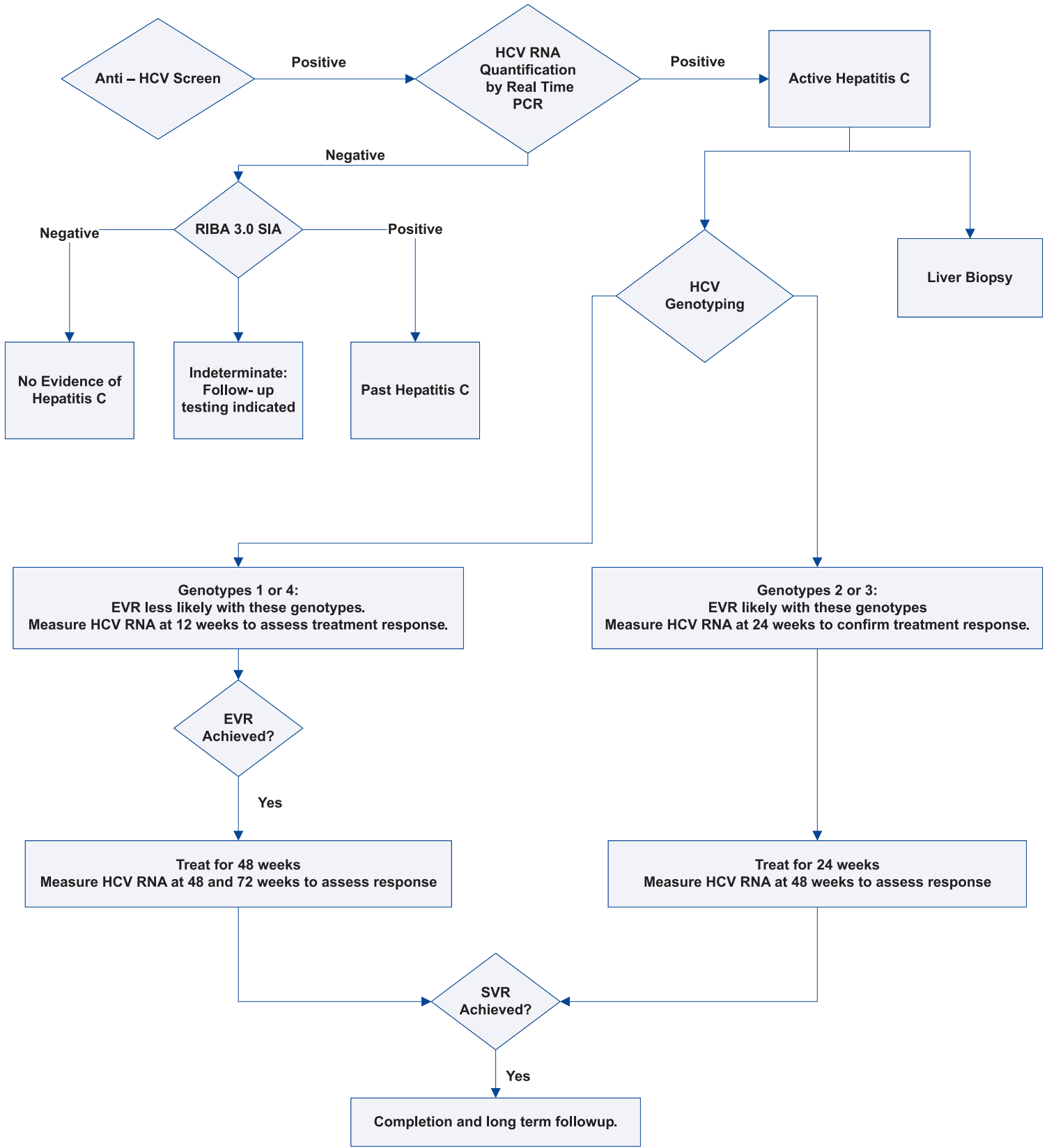
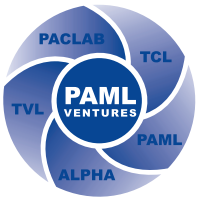


Hepatitis C Algorithm

Prepared by T.J. Allering, M.D.
2006 July



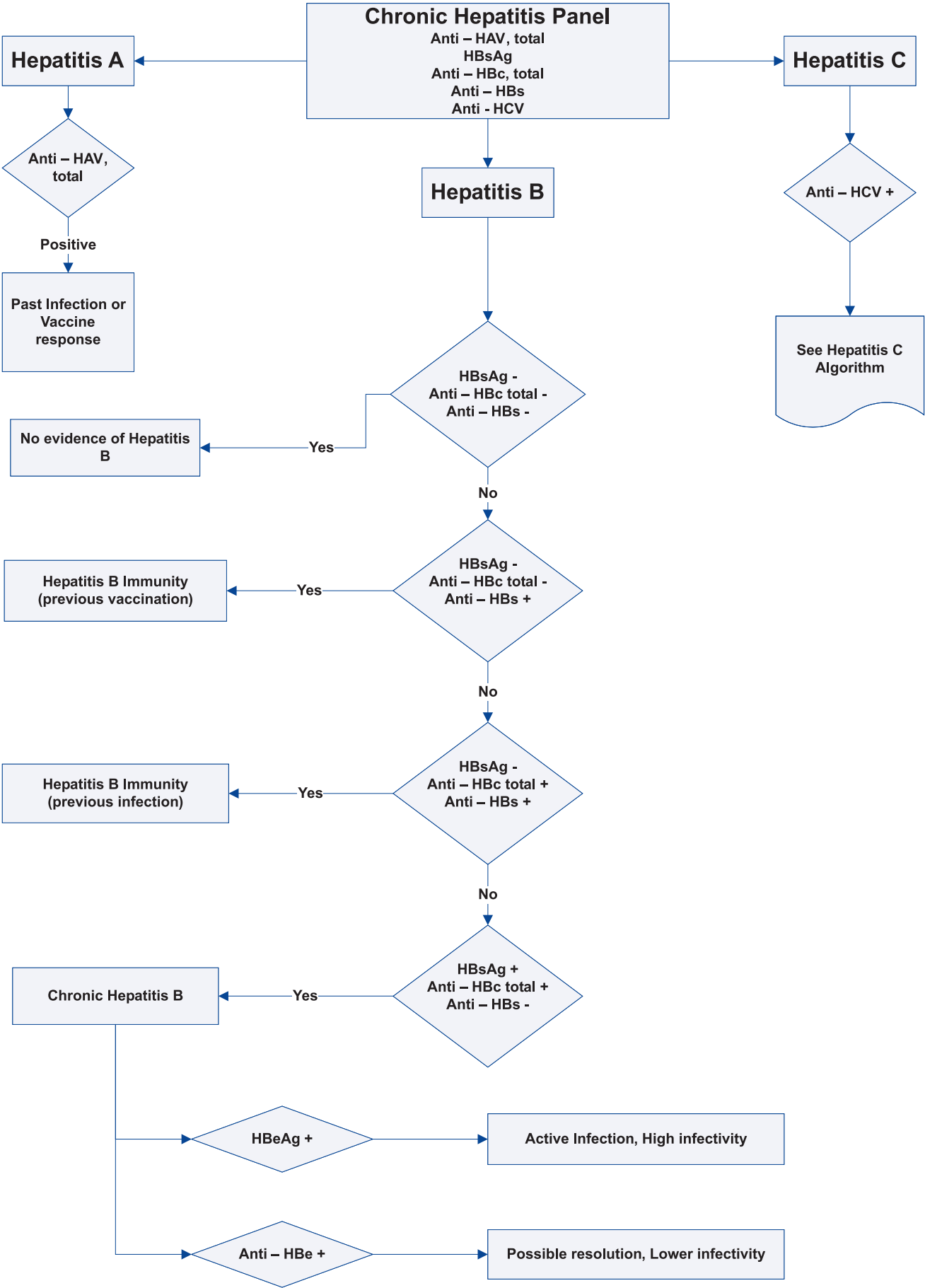
DEFINITIONS:
 Early Viral Response (EVR) = ≥ 2 log decrease in HCV RNA after 12 weeks of treatment.
 Sustained Viral Response (SVR) = undetectable HCV RNA 24 weeks after completion of treatment
 HCV Quantification by Real Time PCR = Sensitive enough to take the place of earlier quantitative and qualitative tests.

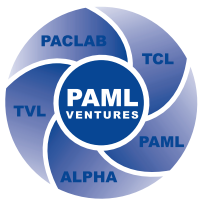


Chronic Hepatitis Algorithm

(Symptoms present > 6 months)

Prepared by T.J. Allering, M.D.
2006 July





Acute Hepatitis Algorithm

Prepared by T.J. Allering, M.D.
2006 July

Acute Hepatitis Panel
Anti – HAV, IgM
HBsAg
Anti-HBc, IgM
Anti - HCV

Hepatitis A

Anti HAV, IgM +

Acute Hepatitis A

Hepatitis C

Anti – HCV +

See Hepatitis C Algorithm

Hepatitis B

HBsAg -
Anti HBc, IgM -

No Evidence of Hepatitis B

HBsAg -
Anti HBc, IgM +

Acute Hepatitis B (Core Window)

HBsAg +
Anti HBc, IgM +

Acute Hepatitis B (or reactivation)

HBsAg +
Anti HBc, IgM -

Anti-HBc, IgG

Very early Acute Hepatitis B

Chronic Hepatitis B or Carrier State

